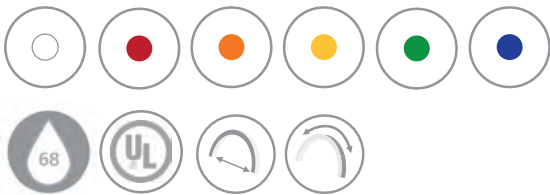


EVERNEON

Art Series

Everylite Datasheet Ver 1.3



Description

Art is the proof that great things come in small packages. The smallest of our EverNeon series can achieve amazing shapes because of its versatility in bending. When flexibility is a must, our customers choose this product knowing that possibilities are endless.

Being square shaped and having two different bending availabilities, we consider this product suited as a great solution for extremely low-profile applications.

Features

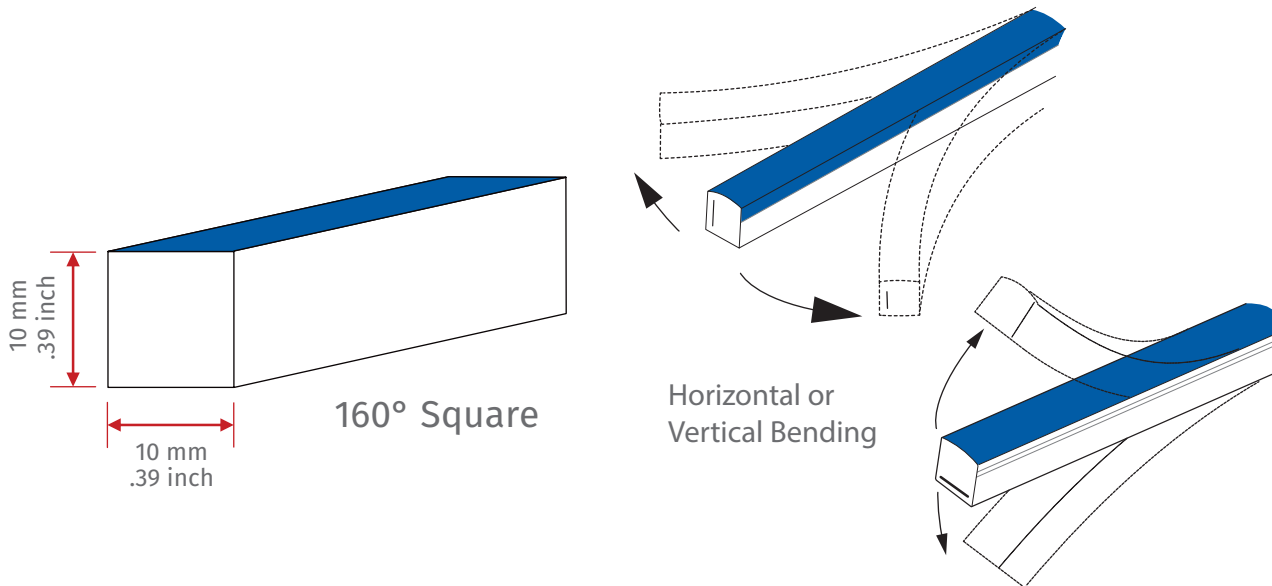
- 160° degree beam angle perfect for border lighting
- Available in either horizontal or vertical bending
- Available in single color only
- Product can achieve an IP68 rating when used with appropriate accessories



EverNeon Art Specification

Item #	LED Color	Surface Color	Wave Length	Min Cutting Length	Luminous Flux/Ft	IP Grade	Working Voltage	Power Consumption	Min. Bend Diameter	LED Spacing	LED Quantity	Max Connection
EN-ART-W3-PH/V	White	White	3000K	3.28"	42.67lm/ft							
EN-ART-W4-PH/V	White	White	4000K	3.28"	42.67lm/ft							
EN-ART-W5-PH/V	White	White	5000K	3.28"	42.67lm/ft							
EN-ART-W6-PH/V	White	White	6000K	3.28"	42.67lm/ft							
EN-ART-RR-PH/V	Red	White	630nm	3.28"	15.24lm/ft	IP68	24V	1.37W/ft	3.94"	0.27"	33/ft	30Ft. if single-end feed 60Ft. if double-end feed
EN-ART-GG-PH/V	Green	White	530nm	3.28"	60.96lm/ft							
EN-ART-BB-PH/V	Blue	White	475nm	3.28"	9.14lm/ft							
EN-ART-YY-PH/V	Yellow	White		3.28"								
EN-ART-AA-PH/V	Amber	White	595nm	3.28"	15.24lm/ft							

Drawing



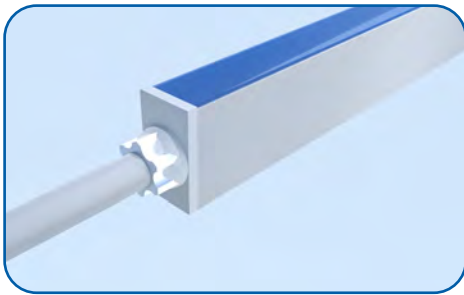
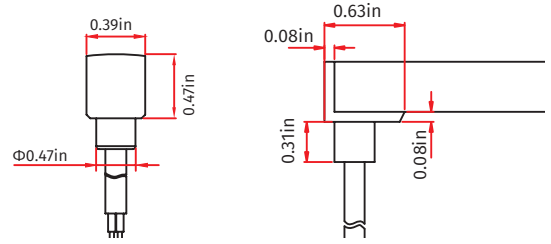
Accessories

Single injection mold

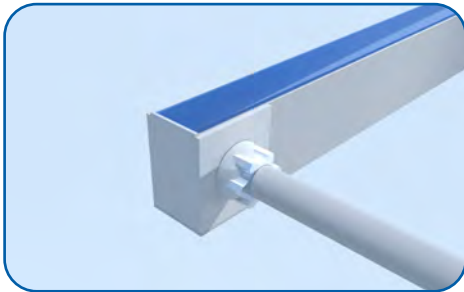
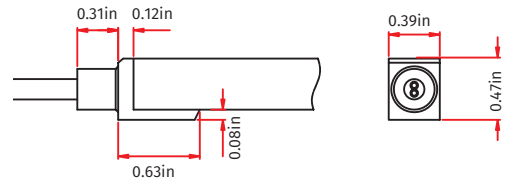
Front connector



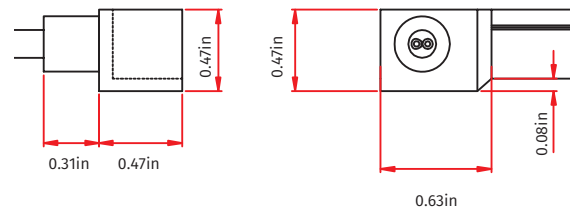
Bottom feed



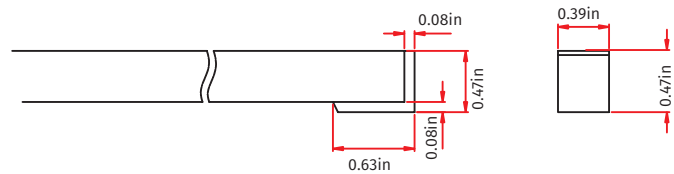
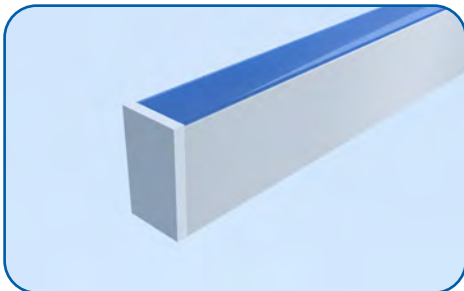
Front feed



Side feed



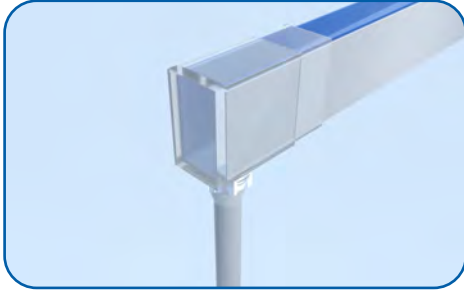
End Cap



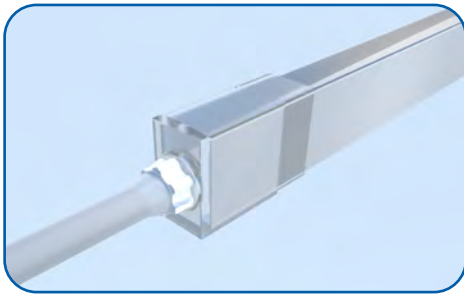
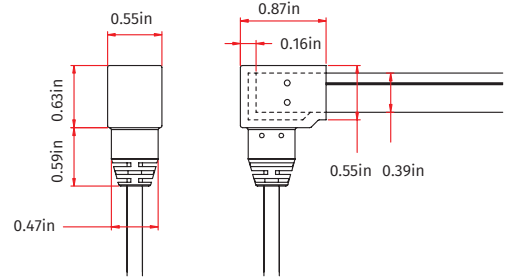
Accessories

Double Injection Mold

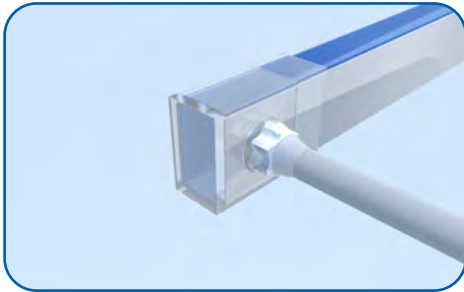
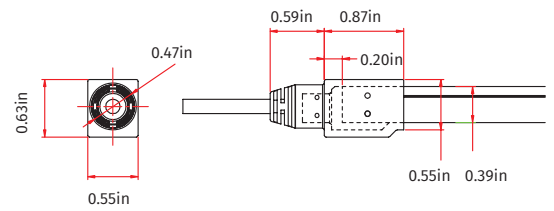
Front connector



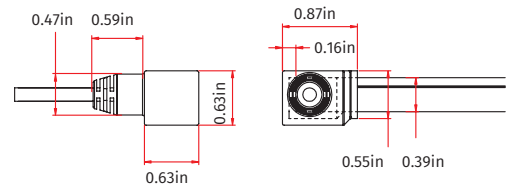
Bottom feed



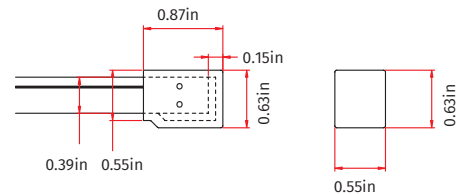
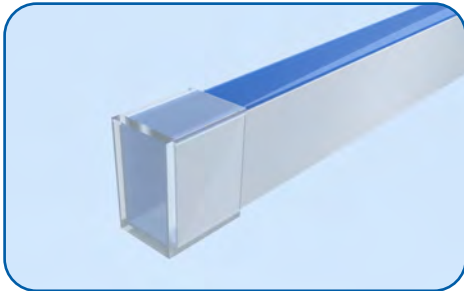
Front feed



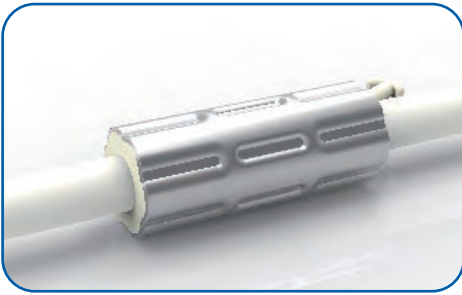
Side feed



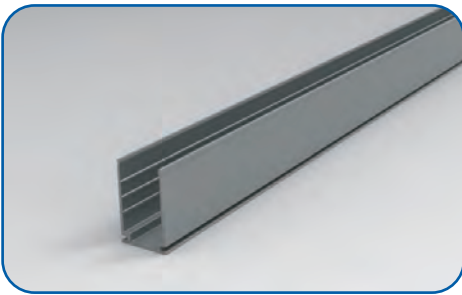
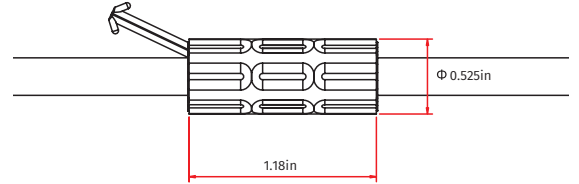
End Cap



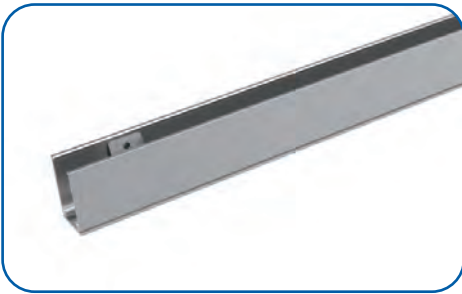
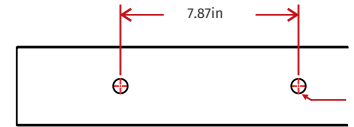
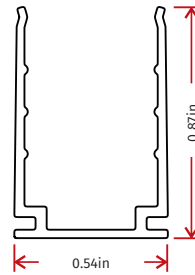
Accessories



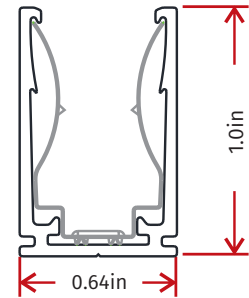
Waterproof ring



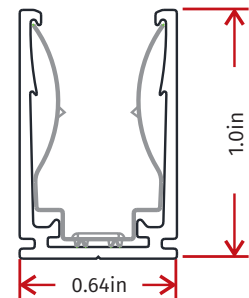
40" and 48" u-channel



48" lock u-channel



2" lock u-channel



Testing

Testing Organization		Certificate Serial N°	Report Reference
UL 2108	UL	20160726-E360029	E360029-2013
CE-EMC	SGS	SZEM1702001259LMV	SZEM160600421302

Fixture Testing

Optical Testing

Spectrum Analysis	IES LM 79 (Lumen, CCT, CRI, XY, SDCM, wavelength)
Photometric Distribution	IES LM 73 (lumen intensity distribution & Lux diagram)
Lumen Maintenance & Lifetime	IES LM84 & IES TM28

Temperature Testing

Normal Temperature Test	UL1598 & UL2388 & IEC60598-1 & IEC60598-2-21
Abnormal Operation Test	UL1598 & UL2388 & IEC60598-1 & IEC60598-2-21

Durability Testing

Bending Test	Manufacturer-defined, 500 cycles
Swing Test	UL2388, >750 cycles
Tensile Test	Manufacturer-defined, > the weight of light in max. connection length double feed
Twist Test	Max connection length double feed Manufacturer-defined, >200 cycles
Ball Impact	UL1598 & UL2388 & IEC60598-1 & IEC60598-2-21
IK07 IK08	IEC62262

Environmental Testing

Chlorinated Water Immersion	BG9667, PH6.8-7.6, free chlorine 0.3-0.6mg/L
Salt Water Immersion	IEC60598-1, Salinity 4%
Salt Spray Test	IEC68-2-11
Outdoor Exposure	Manufacturer-defined
Flame Resistance	UL94
UV Exposure	ASTMG 154, ISO 4892-3, UVA@340nm
IPX5 IPX6 IPX7 IPX8	IEC60529
Temperature Shock	Manufacturer-defined, -40°C -60°C (typical temperature range)
Constant Temperature	Manufacturer-defined

